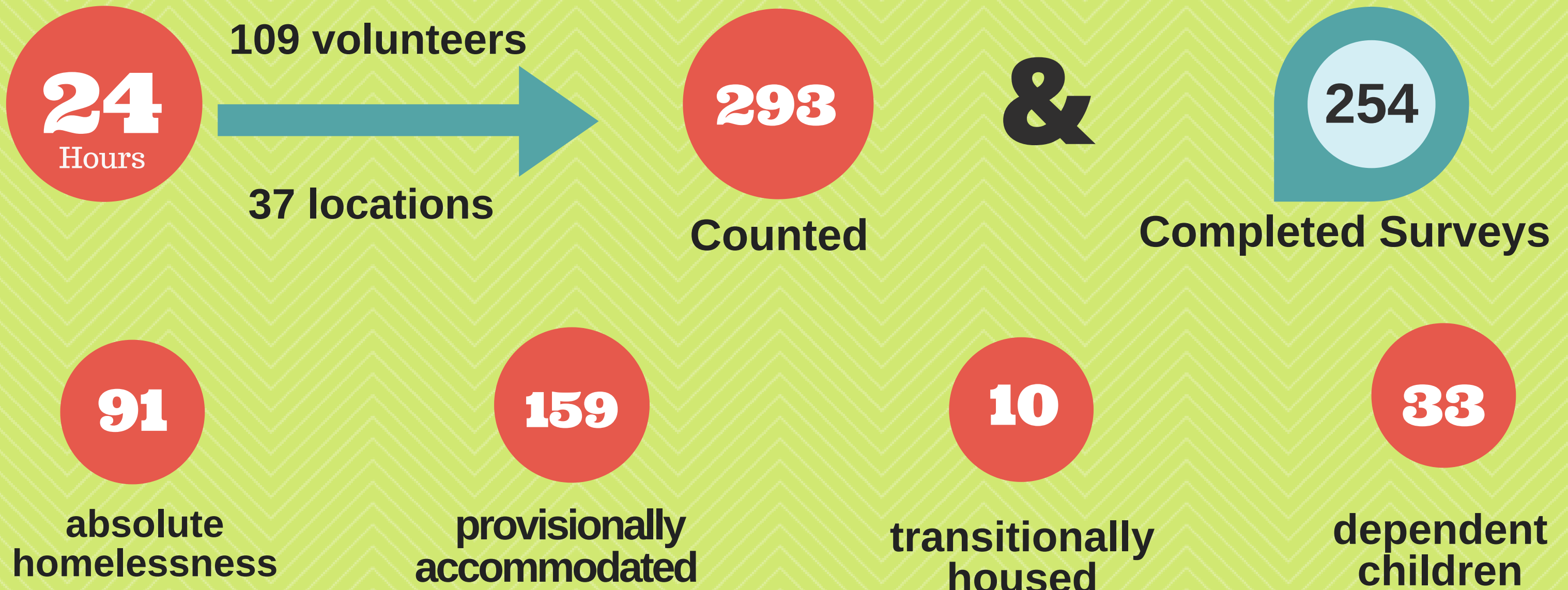


2020

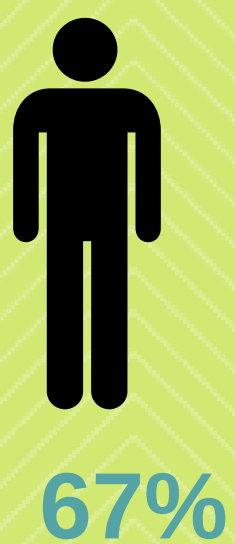
Everyone Counts- Nipissing District



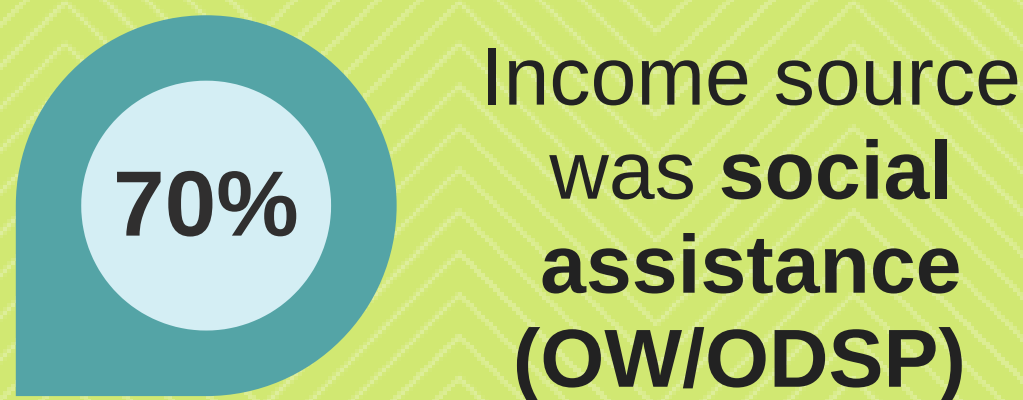
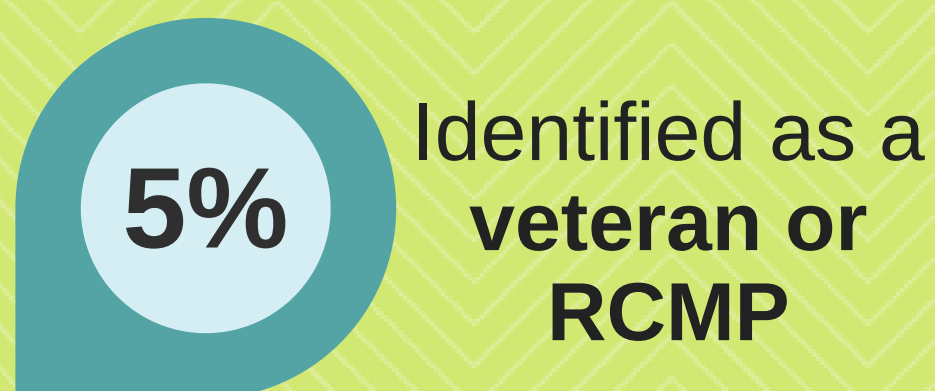
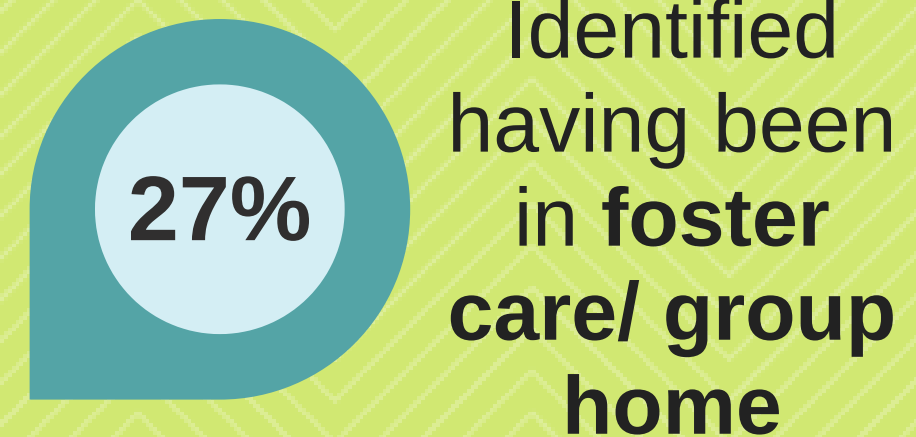
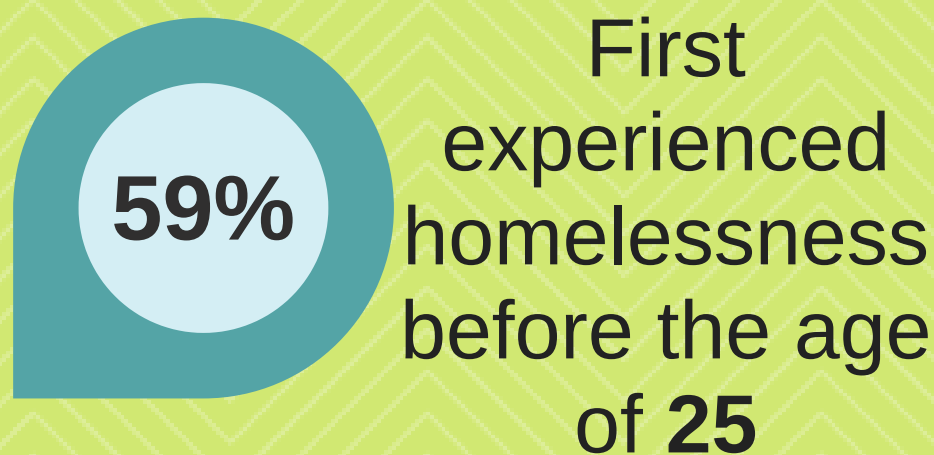
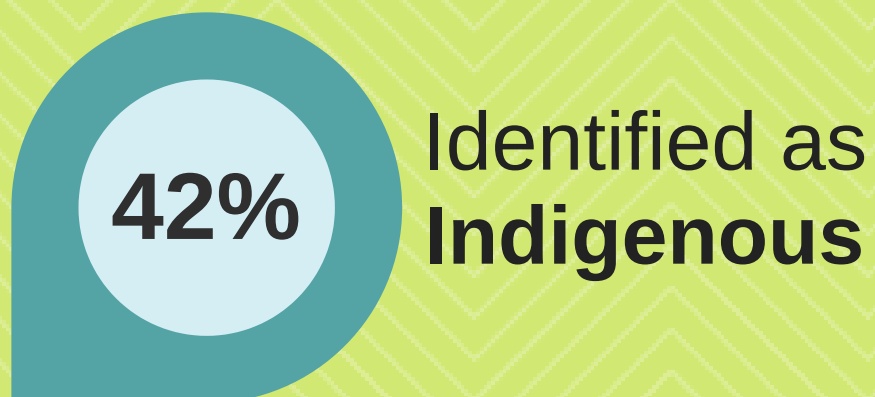
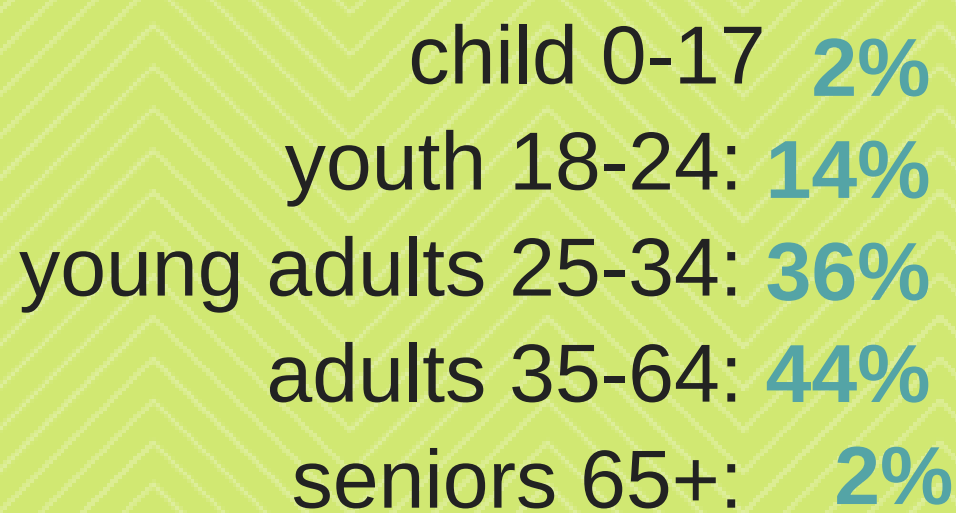
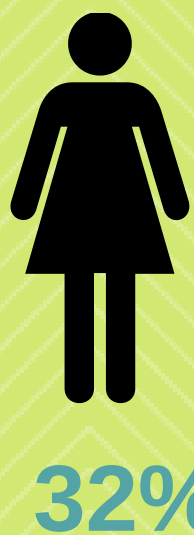
On Wednesday March 11th at 8:00 am to Thursday March 12th at 8:00 am, a Count and Survey of homelessness was conducted in: North Bay, Mattawa, and West Nipissing.



Survey Demographics



gender



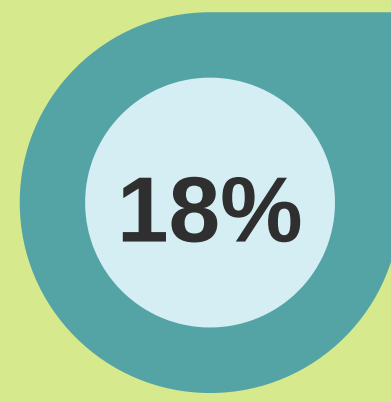
community needs

chronically homeless



for six months or more in the past year

episodically homeless



for three or more times in the past year

public system use In the past 12 months...



117 visits to the E.R.

= \$ 72,306

Average cost based on: www.qch.on.ca
Hospital Fees for Patients
without Canadian Provincial or Federal Health
Insurance



22% had been hospitalized

37 times hospitalized

= \$ 2,579,456

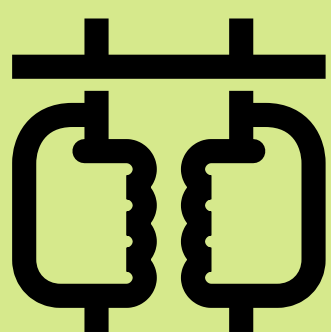
Average cost based on: www.qch.on.ca
Hospital Fees for Patients
without Canadian Provincial or Federal Health
Insurance

916 days hospitalized



56% had interactions with police

1396 interactions



39% spent 1+ day in jail/prison

11,305 days spent incarcerated

= \$ 1,606,101

Average cost based on: Gaetz, Stephen
(2012),
The Real Cost of Homelessness

Total \$ 4,257,863

top 3 reasons for housing loss

- Addiction/ substance use* - 21%
- Incarceration - 19%
- Conflict with Spouse/Partner- 16%

* Based on single response

top 3 barriers to finding housing**

- Low income - 57%
- Discrimination & Stigma - 56%
- Addiction/Substance use - 52%

** Based on multiple responses

